



# MEEVER & MEEVER

## MEEVER BRACING SYSTEM

What are the advantages of this patented system?



### THE MEEVER BRACING SYSTEM

Meever Bracing is a modular system designed & engineered to maintain excavation integrity, while maintaining high flexibility, saving both time and money. Compared to other hydraulic systems, Meever Bracing creates a safer working environment because the system is not under hydraulic load when installed. Meever Bracing is a patented system.

### REDUCED WEIGHT

The brace is lighter than conventional method of steel pipe strutting, therefore smaller machines can be used on site.

### THE ADVANTAGES:

- The first of its kind, with removable hydraulic rams so the load when installed is not under/ with hydraulic load.
- Versatile on site.
- Time and money saving.
- Easy and fast assembly.
- Meever Bracing System is not restricted to size or shape it is versatile in every aspect.
- Is pre assembled as much as possible at the stock location to make assembly on the job as quick and safe as possible.

### FOR WHICH PROJECTS CAN THE MEEVER BRACING SYSTEM BE USED?

- Meever Bracing can be used in construction pits of both steel and concrete.
- It gives no limitation in size and shape for the construction pit, it is versatile in every aspect.
- Meever Bracing can also be connected with conventional welding of beams.



# MEEVER & MEEVER

## MEEVER BRACING SYSTEM

What are the advantages of this patented system?



### DIFFERENT MODULES

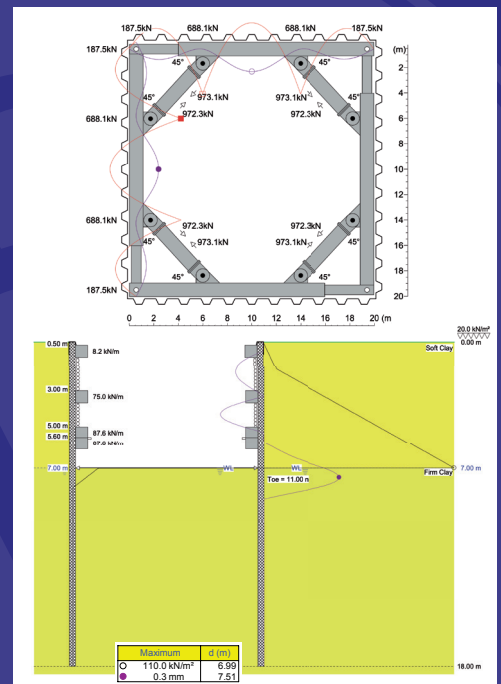
Meever Bracing has modules of 0.5 mtr, 1mtr, 2 mtr, 3 mtr and 6 mtr, which fit together with a full shear capacity joint, secured by one pin. The simple and easy assembly requires minimal training, saving time on site.

### OVER-DIG ALLOWANCE

The Meever Series mechanical unit extends up to 700 mm and hydraulic unit extends up to 200 mm. This means that if over-digging occurs, the hydraulic unit can extend 200 mm to cover the gap between the modules, creating dig flexibility and convenience on site.

### SAFE CROSS BRACING

Cross brace connection points have been designed into the modules. This allows a positive connection between the module and the cross brace.



### WANT TO KNOW MORE?

Our specialists will be happy to help! Contact us without obligation and we will give you all the information you need. We can advise you directly on the best option for your project based on your stated wishes and requirements.

[MEEVER.NL](http://MEEVER.NL)

[info@meever.nl](mailto:info@meever.nl)

+31 (0) 183 - 358383