

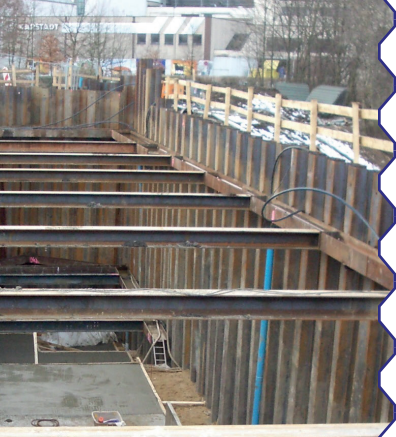


Steel Beams

Meever offers steel beams and sections from stock or directly from production, delivered quickly and flexibly and with ample choice as to types and specifications. They can also be made to measure for your specific application if you so desire. We supply H-beams, U-sections and I-sections of several different lengths, grades and types.

- HEA
- HEB
- HEM
- UNP
- IPE
- Double-U

If you are interested in using lesser quality or used steel beams, we can email you some photos of examples in advance. And we are always happy to advise you on the best choice for your specific project.



HEB	Profile HEB (din 1025)	Width (mm)	Height (mm)	Wx cm ³	Weight kg/m ¹
	100	100	100	89,9	20,9
	120	120	120	144,0	27,4
	140	140	140	216,0	34,5
	160	160	160	311,0	43,7
	180	180	180	426,0	52,5
	200	200	200	570,0	63,0
	220	220	220	736,0	73,0
	240	240	240	938,0	85,0
	260	260	260	1150,0	95,0
	280	280	280	1380,0	106,0
	300	300	300	1680,0	120,0
	320	320	300	1930,0	130,0
	340	340	300	2160,0	137,0
	360	360	300	2400,0	146,0
	400	400	300	2880,0	159,0
	450	450	300	3550,0	175,0
	500	500	300	4290,0	192,0
	550	550	300	4970,0	204,0
	600	600	300	5700,0	217,0
	650	650	300	6480,0	231,0
	700	700	300	7340,0	247,0
	800	800	300	8980,0	269,0
	900	900	300	10980,0	298,0
	1000	1000	300	12890,0	322,0

HEA	Profile HEA (din 1025)	Width (mm)	Height (mm)	Wx cm ³	Weight kg/m ¹
	100	96	100	72,8	17,1
	120	114	120	106,0	20,4
	140	133	140	155,0	25,3
	160	152	160	220,0	31,2
	180	171	180	294,0	36,4
	200	190	200	389,0	43,0
	220	210	220	515,0	52,0
	240	230	240	675,0	62,0
	260	250	260	836,0	70,0
	280	270	280	1010,0	78,0
	300	290	300	1260,0	90,0
	320	310	300	1480,0	100,0
	340	330	300	1680,0	108,0
	360	350	300	1890,0	115,0
	400	390	300	2310,0	128,0
	450	440	300	2900,0	143,0
	500	490	300	3550,0	159,0
	550	540	300	4150,0	170,0
	600	590	300	4790,0	182,0
	650	640	300	5470,0	195,0
	700	690	300	6240,0	209,0
	800	790	300	7680,0	230,0
	900	890	300	9480,0	258,0
	1000	990	300	1190,0	279,0

HEM	Profile HEM (din 1025)	Width (mm)	Height (mm)	Wx cm ³	Weight kg/m ¹
	100	120	106	190	42,8
	120	140	126	288	53,4
	140	160	146	411	64,8
	160	180	166	566	78,1
	180	200	186	748	91,1
	200	220	206	967	106,0
	220	240	226	1220	120,0
	240	270	248	1800	161,0
	260	290	268	2160	176,0
	280	310	288	2550	194,0
	300	340	310	3480	244,0
	320	359	309	3800	251,0
	340	377	309	4050	254,0
	360	395	308	4300	256,0
	400	432	307	4820	262,0
	450	478	307	5500	270,0
	500	524	306	6180	277,0
	550	572	306	6920	285,0
	600	620	305	7660	292,0
	650	668	305	8430	300,0
	700	716	304	9200	309,0
	800	814	303	10870	325,0
	900	910	302	2540	341,0
	1000	1008	302	14330	358,0

UNP	Profile UNP (din 1026)	Width (mm)	Height (mm)	Wx cm ³	Weight kg/m ¹	Weight kg/m ¹ DU-profile
	80	80	45	26,5	8,9	18,0
	100	100	50	41,2	10,9	22,9
	120	120	55	60,7	13,7	28,8
	140	140	60	86,4	16,4	34,5
	160	160	65	116,0	19,3	40,6
	180	180	70	150,0	22,5	47,3
	200	200	75	191,0	26,0	54,6
	220	220	80	245,0	30,0	63,0
	240	240	85	300,0	34,0	71,4
	260	260	90	371,0	39,0	83,0
	280	280	95	448,0	43,0	90,3
	300	300	100	535,0	48,0	100,8
	320	320	100	679,0	61,0	128,1
	350	350	100	734,0	62,0	130,2
	380	380	102	829,0	65,0	136,5
	400	400	110	1020,0	74,0	155,4

